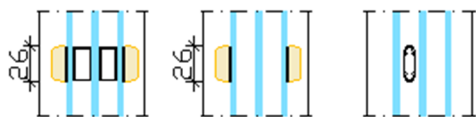


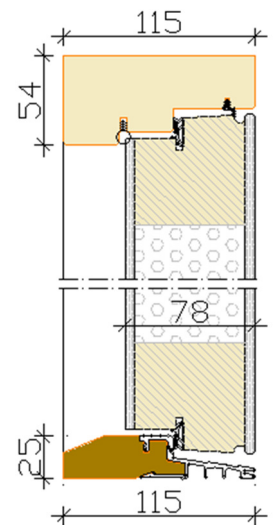
## Aru ED 78 Flush-2 EX

outwards opening 2-seal exterior door

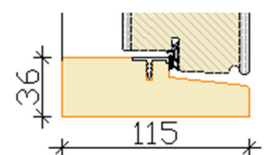
- Made to measure sizes
- Frame 115x54 mm
- Door leaf thickness 78 mm
- Seals in the frame and around the door leaf
- Frame timber selection:
  - fingerjointed or selected laminated pine timber
  - laminated oak timber
  - laminated meranti timber
- Combi or oak threshold
- Finishing with waterbased paint according to RAL or NCS colour chart
- Triple glazing
- Glazing bar options:
  - glued on both sides of the glass+slats inside the glazing (Norwegian style)
  - glued on both sides of the glass (Georgian style)
  - decorative bars inside the glazing



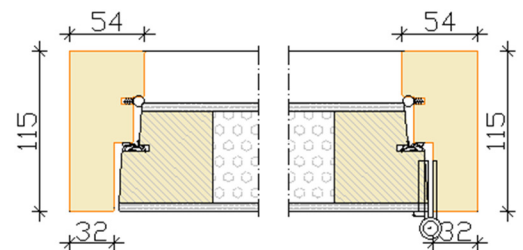
- Ornament:
  - grooves (only on one side or on both sides)
  - glued-on decorative moldings
  - glued-on details
  - glued-on Stainless steel sheet
- 2D adjustable hinges
- Scan (Assa, Abloy) or DIN lock cases
- Extras:
  - rebated front edge of door leaf
  - grooves for jamb extension
  - jamb extensions
  - special glasses (toughened, laminated, sun protection, pattern)
  - various glass spacers
  - concealed hinges
  - smart locks (e.g. Yale Durus, Halke)
  - different lock cylinders, serialized cylinders
  - door handles
  - door closer or stopper
  - letter slot, spy-hole, knocker, timber weather bar, kick plate
- Combinations with fixed parts:
  - in the same frame as the door
  - in separate frame



Combi threshold



Oak threshold



Standard jamb

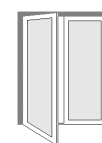
OPENINGS  
Views from outside



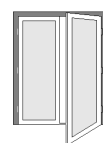
LEFT



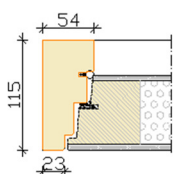
RIGHT



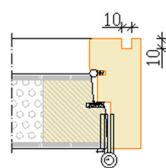
LEFT  
active



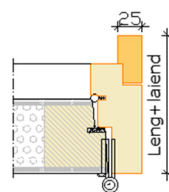
RIGHT  
active



Rebated  
front edge



Jamb with groove



Jamb with extension